



**INFORMATION**

**Total number of rooms:** 515

**Bed capacity:** 1276

- 293 Standart Rooms (24 m<sup>2</sup>)  
(6 Disabled Rooms)
- 79 Junior Suites (35 m<sup>2</sup>)
- 24 Suites (42 m<sup>2</sup>)
- 1 King Suite (170 m<sup>2</sup>)
- 72 Gloria Family Suites (60 m<sup>2</sup>)
- 24 Gloria Villas (66 m<sup>2</sup>)

- 18 Executive Villas (78 m<sup>2</sup>)
- 4 Owner Villas (190 m<sup>2</sup>)

**Room Facilities:**

Wifi access, direct dial telephone, satellite TV, interactive system, Lcd TV, balcony or terrace, bathtub or shower, safe, mini bar, hair dryer, key card system.

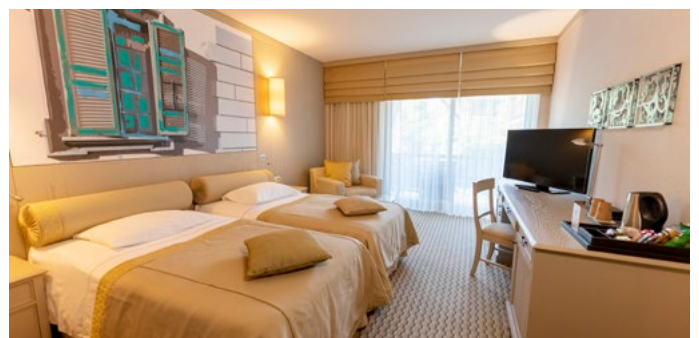
**Main Restaurant:**

- Anatolia
- Mosaïque

**A'la Carte Restaurants:**

- Lancora A'la Carte Restaurant
- Pescado A'la Carte Restaurant
- Harem A'la Carte Restaurant
- Greek A'la Carte Restaurant\*
- Turkuaz A'la Carte Restaurant\*

\* It serves only in the summer season.







*FOR the Perfect meeting.*

**INFORMATION**

**Total number of rooms:** 367

**Bed capacity:** 971

- 199 Superior Rooms (39 m<sup>2</sup>)  
(3 Disabled Rooms)
- 52 Superior Laguna Rooms (39 m<sup>2</sup>)
- 14 Suites (65 m<sup>2</sup>)
- 2 King Suites (160 m<sup>2</sup>)
- 30 Pool Villas (86 m<sup>2</sup>)
- 52 Garden Villas (86 m<sup>2</sup>)
- 10 Deluxe Villas (200 m<sup>2</sup>)
- 1 VIP Villa (400 m<sup>2</sup>)

- 1 Serenity Villa (200 m<sup>2</sup>)
- 1 Queen Villa (250 m<sup>2</sup>)
- 1 King Villa (250 m<sup>2</sup>)
- 1 Presidential Villa (1400 m<sup>2</sup>)

**Room Facilities**

Wifi access, direct dial telephone, satellite TV, interactive system, IP TV, Lcd TV, balcony or terrace, golf bag wardrobe, jacuzzi and separate shower, safe, mini bar, hair dryer, key card system, scale.

**Main Restaurant:**

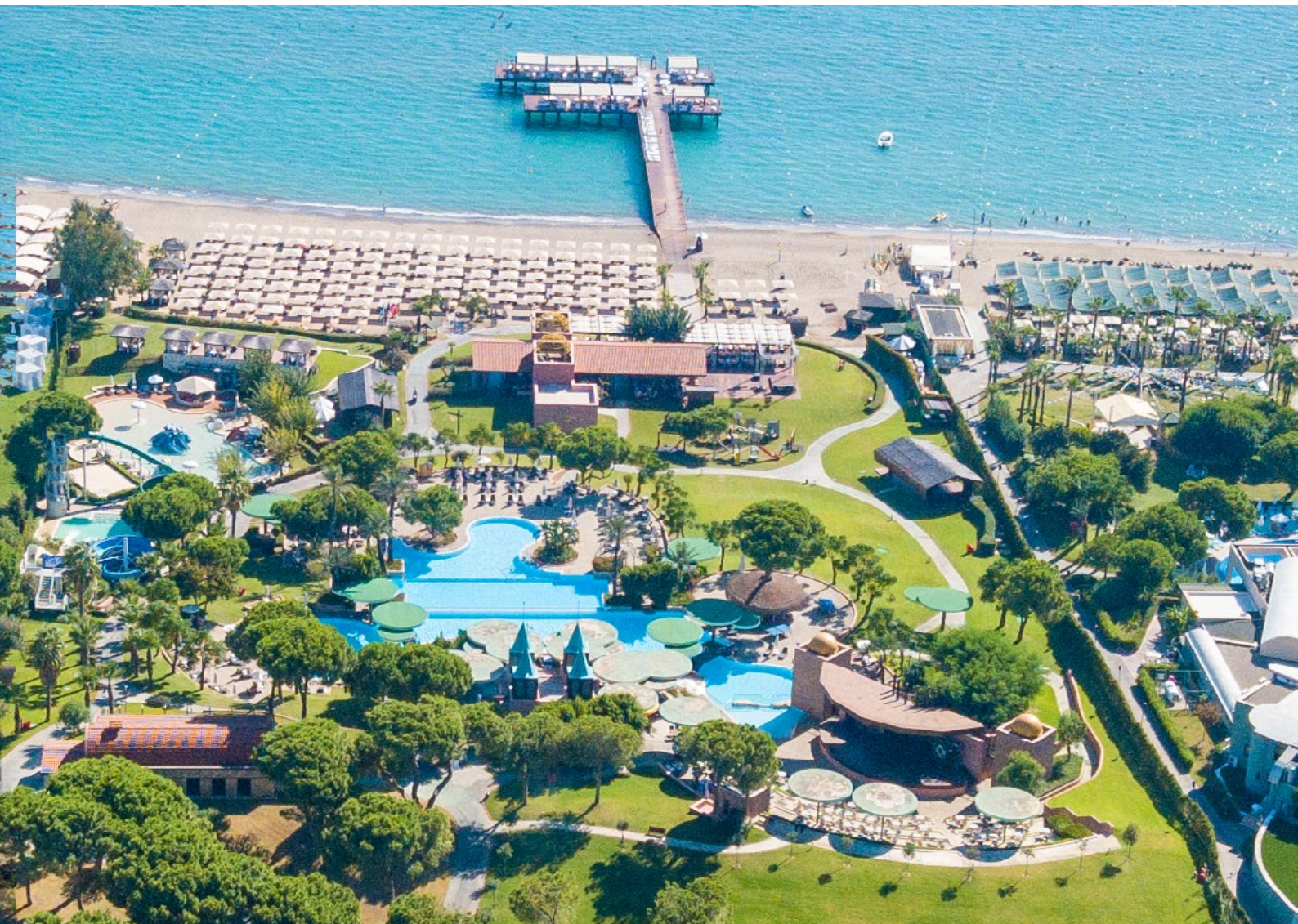
Tetrasomia Restaurant  
Brasserie Restaurant (24 hour)

**A'la Carte Restaurants:**

- Aka A'la Carte
- Serenity Steak House A'la Carte
- Le Jardin A'la Carte
- La Trattoria Romana A'la Carte
- River Landing A'la Carte







**INFORMATION**

**Total number of rooms:** 293

**Bed capacity:** 632

- 144 Standart Rooms (27 m<sup>2</sup>) (4 of them are design for Handicapped Guests)
- 22 Junior Suites (31 m<sup>2</sup>)
- 22 Suites (41 m<sup>2</sup>)
- 70 Family Suites (40 m<sup>2</sup>)
- 8 Deluxe Suites (80 m<sup>2</sup>)
- 2 King Suites (155 m<sup>2</sup>)

- 20 Select Villas (86 m<sup>2</sup>)
- 1 Verde Presidential Villa (700 m<sup>2</sup>)

**Oda Özellikleri:**

Wifi access, direct dial telephone, satellite TV, interactive system, Pay TV, Lcd TV, balcony or terrace, safe, mini bar, hair dryer, key card system, bathtub or shower.

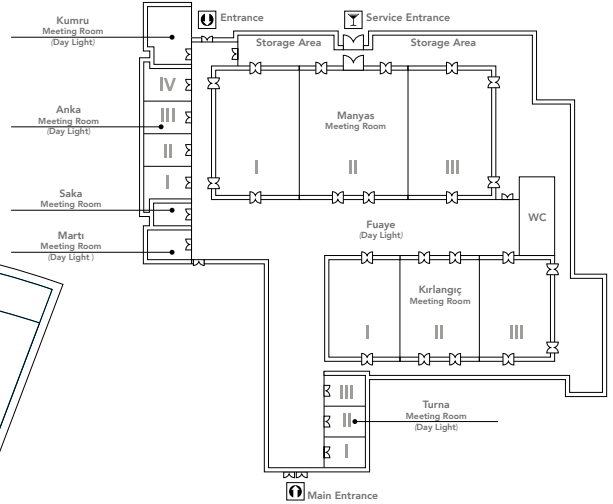
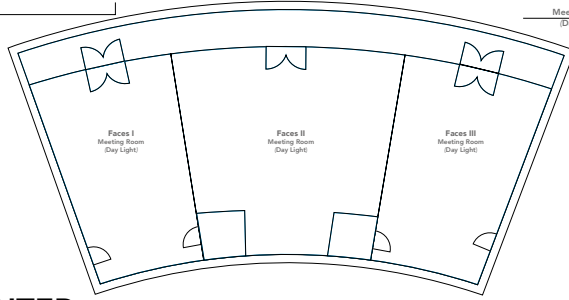
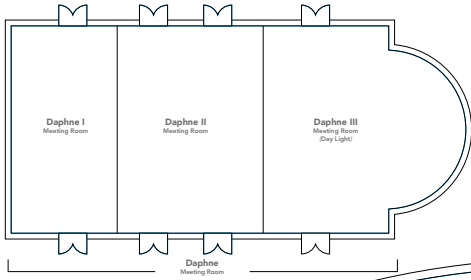
**Main Restaurant:**  
Mythos

**A'la Carte Restaurants:**

- La Famosa A'la Carte Restaurant
- Bazilika A'la Carte Restaurant







### CONVENTION CENTER

MEETING ROOM	WIDTH	LENGTH	AREA	HEIGHT	BANQUET	U SHAPE BANQUET	THEATRE	CLASSROOM
Manyas	22 m	48 m	1056 m <sup>2</sup>	7 m	800 Pax	-	1200 Pax	750 Pax
Manyas I, III	22 m	15 m	330 m <sup>2</sup>	7 m	220 Pax	60 Pax	350 Pax	200 Pax
Manyas II	22 m	17,5 m	396 m <sup>2</sup>	7 m	260 Pax	60 Pax	430 Pax	250 Pax
Fuaye / Foyer	-	-	845 m <sup>2</sup>	-	-	-	-	-

MEETING ROOM	WIDTH	LENGTH	AREA	HEIGHT	BANQUET	U SHAPE BANQUET	THEATRE	CLASSROOM
Kırlangiç	17 m	39 m	663 m <sup>2</sup>	5 m	450 Pax	-	720 Pax	420 Pax
Kırlangiç II	17 m	13 m	221 m <sup>2</sup>	5 m	150 Pax	42 Pax	240 Pax	140 Pax
Kırlangiç I,III	17 m	12,5 m	210 m <sup>2</sup>	5 m	150 Pax	36 Pax	240 Pax	140 Pax

MEETING ROOM	WIDTH	LENGTH	AREA	HEIGHT	BANQUET	U SHAPE BANQUET	THEATRE	CLASSROOM
Turna (Day Light)	7 m	16,5 m	115 m <sup>2</sup>	3 m	70 Pax	45 Pax	100 Pax	70 Pax
Turna I	7 m	7 m	50 m <sup>2</sup>	3 m	-	15 Pax	50 Pax	35 Pax
Turna II	7 m	5 m	35 m <sup>2</sup>	3 m	-	15 Pax	30 Pax	20 Pax
Turna III	7 m	4,5 m	32 m <sup>2</sup>	3 m	-	15 Pax	20 Pax	15 Pax

MEETING ROOM	WIDTH	LENGTH	AREA	HEIGHT	BANQUET	U SHAPE BANQUET	THEATRE	CLASSROOM
Anka (Day Light)	6,5 m	22 m	143 m <sup>2</sup>	3 m	-	60 Pax	120 Pax	90 Pax
Anka I, II, III, IV	6,5 m	5,5 m	35 m <sup>2</sup>	3 m	-	15 Pax	30 Pax	20 Pax
Marti (Day Light)	5,5 m	5,5 m	30 m <sup>2</sup>	3 m	-	12 Pax	15 Pax	-
Saka	5 m	4,5 m	23 m <sup>2</sup>	3 m	-	-	15 Pax	-
Kumru (Day Light)	5,5 m	7,5 m	42 m <sup>2</sup>	3 m	-	20 Pax	30 Pax	20 Pax

MEETING ROOM	WIDTH	LENGTH	AREA	HEIGHT	BANQUET	U SHAPE BANQUET	THEATRE	CLASSROOM
Faces Halls	10,5 m	24 m	251 m <sup>2</sup>	3,8 m	70 Pax	-	160 Pax	80 Pax
Faces I (Day Light)	10,5 m	6,5 m	68 m <sup>2</sup>	3,8 m	30 Pax	14 Pax	45 Pax	27 Pax
Faces II (Day Light)	10,5 m	11 m	115 m <sup>2</sup>	3,8 m	48 Pax	24 Pax	65 Pax	30 Pax
Faces III (Day Light)	10,5 m	6,5 m	68 m <sup>2</sup>	3,8 m	30 Pax	20 Pax	45 Pax	24 Pax

MEETING ROOM	LENGTH	WIDTH	AREA	HEIGHT	BANQUET	THEATRE	CLASSROOM
Daphne I, II, III	32 m	16,5 m	528 m <sup>2</sup>	6 m	350 Pax	650 Pax	380 Pax
Daphne I	9,5 m	16,5 m	156 m <sup>2</sup>	6 m	80 Pax	120 Pax	80 Pax
Daphne II	12,5 m	16,5 m	206 m <sup>2</sup>	6 m	130 Pax	230 Pax	120 Pax
Daphne III (Day Light)	10 m	16,5 m	165 m <sup>2</sup>	6 m	100 Pax	180 Pax	100 Pax